

AGENT Pack No.04

#goBEYONDenglish

Navitas English Guide

Contents

Slide 2 -	Contents
Slide 3 -	What makes us unique?
Slide 4 -	Perth Campus
Slide 5 -	Sydney Campus
Slide 6 -	Course Options
Slide 7 -	General English
Slide 11 -	Cambridge Preparation
Slide 16 -	IELTS Preparation
Slide 20 -	Academic English
Slide 26 -	Student Services
Slide 28 -	Accommodation
Slide 29 -	Boomerang and myStudy
Slide 31 -	Key Information
Slide 32 -	Course Progression
Slide 33 -	Dates, timetable & levels
Slide 34 -	Resources how to get started and apply
Slide 35 -	Student Guides
Slide 37 -	Contacts

What makes us unique?

We care.



History

Over 40yrs, Navitas English has taught thousands of students to reach their education and career goals supported by over 75 pathway partners



Quality

We have a solid reputation as a quality English school with 2 campus locations in Perth & Sydney accessible by a free flight - airlink subject to T&C's



Specialists

In four key programs - General English, Academic English, IELTS Preparation and Cambridge Preparation



Core Beliefs

Quality teaching supported by monthly professional development for our teaching team



Complementary myStudy

Access to 60-mins daily of myStudy for day students and Boomerang social activities



Boutique campuses

Relaxed, safe and open spaces with easy access to facilities such as kitchens and libraries with no wait times



Student Support

Dedicated face-to-face support on campus and 24/7 telephone emergency back up



Tech Support

Online support and study practice through Moodle and Clarity



Student Progression

Guaranteed progression and 1-2-1 private student/teacher consultations

Perth

- Located in vibrant Northbridge
- Amazing outdoor area with ping-pong table and BBQ
- Relaxed and spacious student lounge and kitchen with television
- 15 Classrooms, computer lab, selective library & Quiet room
- Easy access – lifts and stairs



Sydney

- Modern campus in a CBD location with great views and access to Hyde Park
- Accessible by lift and escalators with kitchen facilities
- 18 Classrooms and resources library
- Multimedia room
- Computer touch down spaces



Your course options

General English

Develop English skills and confidence you can use daily. You will develop skills to fast track your career and support your work prospects in real life with other English speakers giving you confidence to live and speak with ease in an English-speaking environment.

Levels - Elementary to Advanced starting every Monday via day 1 placement test.

Academic English

This will help you develop the skills you need to participate confidently and effectively in a university or TAFE program in Australia. You will learn how to plan, research and structure written assignments, and express your ideas clearly in spoken presentations. As well as providing direct entry to a wide range of universities and TAFEs, Academic English courses provide you with real-life learning about the culture, expectations and requirements of tertiary education in Australia.

Levels - Intermediate to Advanced. Regular intakes throughout the year.

Entry test - Navitas English test or IELTS or TOEFL or Versant or PTE Academic or HKDSE.



IELTS Preparation

Improve your skills and learn the test strategies and techniques you need to achieve your very best IELTS score. Our IELTS courses will develop and improve all the necessary skills such as writing well-structured essays and expressing ideas clearly and effectively when speaking. Regular test practice and guidance will give you the confidence you need when taking the official test. IELTS is globally recognised and enables our students to achieve their goals and dreams, from entry to university, to career advancement and for migration purposes.

Levels - Intermediate to Advanced starting every Monday.

Entry test - Navitas English IELTS pretest or IELTS.

Cambridge Preparation

Our Cambridge preparation courses fast track your reading, writing, listening and speaking skills and give you a strong foundation in both grammatical accuracy and vocabulary range. By providing clear exam strategies and techniques with regular exam practice and one-to-one teacher support, you will develop life-long study skills and have the very best chance to succeed with high grades in the official Cambridge examination.

Levels - B1 Preliminary, B2 First, C1 Advanced, C2 Proficiency regular intakes throughout the year.

Entry test - Navitas English Cambridge pre-test, IELTS or Cambridge exam.



General English

Develop language skills
for real life situations

Program in detail

General English

Our General English courses help students develop skills for real-world and real-life communication.



Students studying General English will:

- experience a dynamic and interactive learning environment.
- build skills in international communication by studying with other students from around the world
- participate in bonding activities throughout the course, helping students build confidence and trust
- complete project work and build presentation skills

Students will graduate with English skills that can be used anywhere, plus a global network of friends and contacts.

What the course looks like



Monday to Friday
20 hrs per week



An average class size
14 to 18 max.



Duration from 1 – 50 weeks
Start any Monday



Complimentary daily myStudy
program with teacher supervision &
support



Suitable for all levels of English
Elementary to Advanced



Weekly tests to monitor progress



One-to-one academic counselling
session with your teachers



Day or evening
timetables available

Resources

Supporting your recruitment activities

A range of flyers, videos and factsheets are available to support your recruitment activities



[General English](#)



[Information in your language](#)



[General English at a glance](#)





Cambridge Preparation

Gain a qualification respected by companies,
governments and universities around the world.

Program in detail

Cambridge Preparation - B1 Preliminary

Cambridge Preparation - B2 First

Cambridge Preparation - C1 Advanced

Cambridge Preparation - C2 Proficiency

Cambridge English language tests are recognised and respected by companies, governments and universities around the world; and a Cambridge Preparation course will help maximise your results.



A Cambridge Preparation course provides:

- opportunities to improve all language skills: reading, writing, listening and speaking
- a strong foundation in both grammatical accuracy and vocabulary range
- special test strategies with test practice and one to one support from the teachers,
- life-long study skills to be an independent learner.

Student will graduate with increased work, study and travel prospects and the best possible chance of achieving high grades in the Cambridge Examination.

What the course looks like



Monday to Friday
20 hrs per week



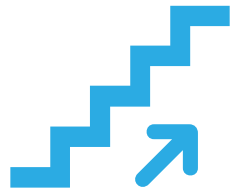
Closed classes with fixed intakes
that are tailored
to the group's needs



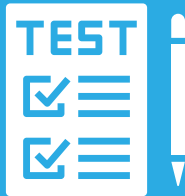
Writing skills development;
up to two pieces of
writing per week



Complimentary daily myStudy
program with teacher supervision
& support



Four levels, starting from
IELTS 4.0 (or equivalent)



Two full practice exams under test
conditions during the course, plus
daily, hour-long practice exams



Personalised feedback and
one-to-one academic counselling
session with teachers



Day or evening
timetables available

Entry Requirements

A minimum English level is required for entry to Cambridge Preparation.
If you do not have an official test result, contact us and we can arrange a level test.

B1 Preliminary	B2 First	C1 Advanced	C2 Proficiency
<ul style="list-style-type: none">• IELTS 4.0• Cambridge English Scale 130	<ul style="list-style-type: none">• IELTS 5.0• Cambridge English Scale 150	<ul style="list-style-type: none">• IELTS 6.0• Cambridge English Scale 170	<ul style="list-style-type: none">• IELTS 7.0• Cambridge English Scale 190
Prepares students for: B1 Preliminary (PET) Exam	Prepares students for: B2 First (FCE) Exam	Prepares students for: B1 Advanced (CAE) Exam	Prepares students for: B2 Proficiency (CPE) Exam

Resources

Supporting your recruitment activities

A range of flyers, videos and factsheets are available to support your recruitment activities



[Cambridge Preparation](#)



[Information in your language](#)



[Cambridge Preparation at a glance](#)





IELTS Preparation

Create new opportunities
for travel, work or study globally

Program in detail

IELTS Preparation

For students with:
IELTS 5.0 overall; writing 5.0; no other
skill less than 4.5
CEFR B1 – B2
or equivalent

This course focuses on improving language skills proficiencies and test strategies, enabling students to take the IELTS exam with confidence.



Students can secure their best IELTS score by developing skills and strategies in:

- Listening: note-taking, listening for specific information
- Speaking: expressing ideas and opinions, seeking clarification, pronunciation
- Reading: speed reading strategies, understanding graphs and charts, analysing IELTS specimen papers
- Writing: interpreting questions, organising content, grammatical accuracy
- Understanding the test structure

What the course looks like



Monday to Friday
20 hrs per week



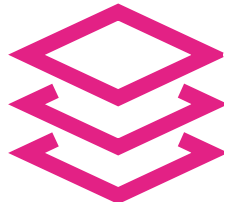
An average class size
14 to 18 max.



Duration from 1 – 25 weeks
Start any Monday



Complimentary daily myStudy
program with teacher supervision &
support



Suitable for students with an
Upper Intermediate to Advanced
level of English



Writing skills development;
up to two pieces of
writing per week



Personalised feedback provided
throughout the course.



Practice IELTS tests every week

Resources

Supporting your recruitment activities

A range of flyers, videos and factsheets are available to support your recruitment activities



[IELTS Preparation](#)



[Information in your language](#)



[IELTS Preparation at a glance](#)



An overhead view of five students sitting around a white circular table, engaged in a study session. The students are diverse in age and appearance. The table is cluttered with various academic materials: several open textbooks, two laptops, multiple smartphones, yellow and orange sticky notes, and a small blue water bottle. The students are focused on their work, with some looking at books and others at their devices. The background is a plain, light-colored floor.

Academic English

Preparing students for
future studies.

Program in detail

Academic English

Our Academic English (AE) course has been developed to target two core areas making it a **class leader** in Australia.



As a pathway

AE is certified to meet the pathway partners entry requirements so no English language test such as IELTS or PTE is needed to access over 70+ pathways.

With an average duration of 10 weeks which is in two blocks of 5 weeks needed to access the pathway.

We have developed our own Academic English material which has been approved by over 70+ pathway partners in Australia.



A head start in further studies

Practising researching and time management and expanding critical thinking and using the same learning management and referencing systems used across most universities and colleges in Australia.

This means that students have a better chance of successfully reaching their full potential in year 1 at university, college or TAFE

What the course looks like



Monday to Friday
20 hrs per week + 5hrs of self-study
focusing on assessments and
additional tasks.



An average class size
14 to 18 max.



Take a free English test with us
or have an acceptable IELTS,
PTE, Versant, TOEFL, iBT and
PBT, HKDSE test results



An individual needs analysis
interview and discussion about your
study will take place on day one



Suitable for students with an
Intermediate to Advanced level of
English



One-to-one private consultation
with your teacher to ensure
progression



Course submissions are based
on assessed tasks, assessments
and exams via MOODLE
and Turnitin



Online studies will be facilitated by
ZOOM and access to MOODLE
mix of breakout rooms and
whiteboards will enhance studies

6 Things you need to know

about Academic English



- 1** ACADEMIC ENGLISH TEACHERS FOR NAVITAS ENGLISH ARE SPECIALISED AS THEY **ONLY** TEACH OUR ACADEMIC COURSE
- 2** WE HAVE THE MOST EXPERIENCED TEACHERS TEACHING AE WITH AN AVERAGE DURATION OF **10** YEARS PLUS
- 3** WITH A ***93%** PASS RATE ****PROGRESSION** DURING THE COURSE IS GUARANTEED
- 4** WITH A DUAL CORE FUNCTION OF ACCESSING UNIVERSITY, COLLEGE OR TAFE WITH **NO ENGLISH TEST** NEEDED + FUTURE PROOFING STUDIES
- 5** DEVELOP CONFIDENCE TO SUCCEED WITH **ASSIGNMENTS**, GROUP ACTIVITIES AND PRESENTATIONS FOR FUTURE STUDIES AND CAREER PROGRESSION.
- 6** OUR FREE LANGUAGE SUPPORT, IS ONLY A PHONE CALL AWAY.

THESE **ONE-TO-ONE** SESSIONS OFFER TARGETED ASSISTANCE FOR 15 MINUTES AND ARE AVAILABLE DURING FURTHER EDUCATION STUDIES

*September 2018 Teaching and Learning Report

**Progression based on attendance and successful completion of assignments

Entry Requirements

A minimum English level is required for entry to Academic English.
If you do not have an official test result, contact us and we can arrange a level test.

Academic English 1

- IELTS Academic: 4.5 overall (writing 4.5, other bands 4.0)
- Pearson PTE Academic: 30 (writing 30, other skills 24)
- TOEFL iBT: 32 (writing 12)
- Versant: 37 (writing 37, other skills 32)

Academic English 2

- IELTS Academic: 5.0 overall (writing 5.0, other bands 4.5)
- Pearson PTE Academic: 36 (writing 36, other skills 30)
- TOEFL iBT: 35 (writing 14)
- Versant: 41 (writing 41, other skills 37)
- HKDSE English Grade 2

Academic English 3

- IELTS Academic 5.5 overall (writing 5.5, other bands 5.0)
- Pearson PTE Academic 42 (writing 42, other skills 36)
- TOEFL iBT: 46 (writing 18)
- Versant: 46 (writing 46, other skills 41)
- HKDSE English Grade 3

Academic English 4

- IELTS Academic 6.0 overall (writing 6.0, other bands 5.5)
- Pearson PTE Academic 50 (writing 50, other skills 42)
- TOEFL iBT: 60 (writing 21)
- Versant: 51 (writing 51, other skills 46)
- HKDSE English Grade 4

Prepares students for:

Academic English 2

Prepares students for:

Academic English 3, Diploma
Foundation, Certificate IV

Prepares students for:

Academic 4, Bachelor's degree,
Associate degree, Advanced
Diploma,

Prepares students for:

Master's degree, Master's degree
with higher entry requirements &
some post-graduate Research courses
and health science

Resources

Supporting your recruitment activities

A range of flyers, videos and factsheets are available to support your recruitment activities



[Academic English](#)

[Pathway Agreements](#)



[Information in your language](#)



[Academic English at a glance](#)





Student Services

Supporting students
throughout their studies.

Services & support

Our Student Services team are available to support students both in and out side of the classroom.



Arriving in Australia

Support starts the moment you arrive with our airport pick up service and detailed Orientation Program.



Accommodation

Whether you are looking for homestay or independent living options, we can help!



Help and advice

Our academic and welfare counsellors can help with general advice and support for day-to-day concerns while our 24-hour emergency service is just a phone call away.



Boomerang

Make friends and explore your new home with our scheduled social activities.

Accommodation

Arriving in a new country doesn't have to be difficult. Our accommodation options will get you settled and living like a local in no time.

Standard Homestay

- Approximately 60 minutes travel time to your school
- Furnished private room with a bed, wardrobe, desk and reading light
- Half board: breakfast and dinner Monday to Friday; breakfast, lunch, and dinner on weekends
- Other boarders are allowed
- Suitable for all ages inc. wifi

VIP Homestay

Standard homestay plus

- Private bathroom

Self-catered homestay

Standard homestay with differences:

- You can use the kitchen
- Furnished room with a bed, wardrobe, desk and reading light
- Limited interaction with homestay family
- Not available to students under 18

Independent accommodation (guest house, hostel, hotel or apartment) please check our website for further information: www.navitasenglish.edu.au/navitas-english-independent-accommodation

Boomerang Social Activities Program

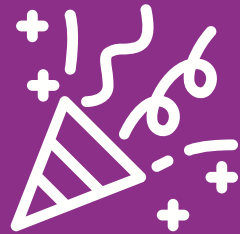
Participate in cultural, sporting and social activities with classmates from all over the world.



Day trips



Surf camps



Student parties



[Sample Calendar >>](#)

Boomerang & myStudy


- Day trips
- Surfing lessons
- Student parties
- Coffee club
- and much more....!

myStudy complementary access to 5hrs of study per week for day students.

Boomerang Social Activities Program

Participate in cultural, sporting and social activities with classmates from all over the world and myStudy.

Access the Boomerang and myStudy Monthly schedule.



AUGUST 2023

WEEKEND EVENTS & NOTES

MONDAY	TUESDAY	WEDNESDAY	THURSDAY	FRIDAY
31 myStudy Business Communication & Culture CV 2 Room 4	1 myStudy Speaking & Listening (100-301) Atrium Exam Practice Reading (302-ADV) Room 5 Boomerang Boomerang Quiz at 2.00pm	2 myStudy Speaking & Listening (302-ADV) Atrium Exam Practice Reading (100-301) Room 5 Pop-up Lesson Vocabulary and Listening practice Room 4	3 myStudy Speaking & Listening (100-301) Atrium Exam Practice Listening (302-ADV) Room 5 Boomerang Soccer Competition at Hyde Park at 2.00pm	4 myStudy Speaking & Listening (302-ADV) Atrium Exam Practice Listening (100-301) Room 5 Reading and Writing (100-301) Room 3 Pronunciation Room 4
7 myStudy Business Communication & Culture Interview Skills Room 4	8 myStudy Speaking & Listening (100-301) Atrium Exam Practice Reading (302-ADV) Room 5 Cambridge Masterclass B2 First (FCE) C1 Advanced (CAE) Room 4 Boomerang Speed Friending at 1.00pm	9 myStudy Speaking & Listening (302-ADV) Atrium Exam Practice Reading (100-301) Room 5 Pop-up Lesson Vocabulary and Listening practice Room 4	10 myStudy Speaking & Listening (100-301) Atrium Exam Practice Listening (302-ADV) Room 5 Business Communication & Culture Hospitality English 1 Room 4 Boomerang Ping-Pong Competition at 2.00pm	11 myStudy Speaking & Listening (302-ADV) Atrium Exam Practice Listening (100-301) Room 5 Pop-up Lesson Vocabulary and speaking using board games Room 4
14 myStudy Business Communication & Culture CV 1 Room 4	15 myStudy Speaking & Listening (100-301) Atrium Exam Practice Reading (302-ADV) Room 5 Cambridge Masterclass B1 Preliminary (PET) Room 4	16 myStudy Speaking & Listening (302-ADV) Atrium Exam Practice Reading (100-301) Room 5 Pop-up Lesson Vocabulary and Listening practice Room 4 Boomerang K-Pop Dance Class at 4.20pm	17 myStudy Speaking & Listening (100-301) Atrium Exam Practice Listening (302-ADV) Room 5 Boomerang Afternoon tea & Snacks for AEA/IELTS students at 2.35pm	18 myStudy Speaking & Listening (302-ADV) Atrium Exam Practice Listening (100-301) Room 5 Reading and Writing (100-301) Room 3 Pronunciation Room 4
21 myStudy Business Communication & Culture CV 2 Room 4	22 myStudy Speaking & Listening (100-301) Atrium Exam Practice Reading (302-ADV) Room 5 Boomerang Dinosaurs at Museum at 2.00pm	23 Cambridge Pre-Test B2 First (FCE) C1 Advanced (CAE) Library at 10.30am myStudy Speaking & Listening (302-ADV) Atrium Exam Practice Reading (100-301) Room 5 Pop-up Lesson Vocabulary and Listening practice Room 4	24 Cambridge Pre-Test B2 First (FCE) C1 Advanced (CAE) Library at 10.30am myStudy Speaking & Listening (100-301) Atrium Exam Practice Listening (302-ADV) Room 5 Business Communication & Culture Hospitality English 2 Room 4 Boomerang Anzac Memorial Hyde Park at 2pm	25 myStudy Speaking & Listening (302-ADV) Atrium Exam Practice Listening (100-301) Room 5 Pop-up Lesson Vocabulary and speaking using board games Room 4 Boomerang Anzac Memorial Hyde Park at 2pm
28 myStudy Business Communication & Culture Interview Skills Room 4	29 myStudy Speaking & Listening (100-301) Atrium Exam Practice Reading (302-ADV) Room 5 Boomerang Evening tea & Snacks at 7.10pm	30 Cambridge Pre-Test B1 Preliminary (PET) Library at 10.30am myStudy Speaking & Listening (302-ADV) Atrium Exam Practice Reading (100-301) Room 5 Pop-up Lesson Vocabulary and Listening practice Room 4	31 Cambridge Pre-Test B1 Preliminary (PET) Library at 10.30am myStudy Speaking & Listening (100-301) Atrium Exam Practice Listening (302-ADV) Room 5 Boomerang Sydney Sightseeing at 2.00pm Cremorne Point Walk	1 myStudy Speaking & Listening (302-ADV) Atrium Exam Practice Listening (100-301) Room 5 Reading and Writing (100-301) Room 3 Pronunciation Room 4

myStudy Mon-Fri, 1pm-2pm

- 100-301 = Elementary to Intermediate
- 302-ADV = Upper-Int to Advanced

Progression & Development

- Speak to your teacher(s) to make an individual appointment about your learning progress.

In Sydney this month


- 19 Jul - 30 Sep Culture Up Late 2023
- 20 Jul - 20 Aug - FIFA Women's World Cup Australia and New Zealand
- 29 Jul - 13 Aug Botanica de Materia Medica
- 3 Aug - 6 Aug Sydney International Boat Show
- 13 Aug CITY2SURF Let's Run Sydney

Colourful Weekend Trips

- Every Saturday - Blue Mountains
- Every Saturday - Hunter Valley
- Every Saturday - Canberra
- Every Sunday - Port Stephens
- 4 - 6 Aug - Surf Camp (Book via email below)

Scan QR code to book your trip or email Charlene if you have questions

charlene@colourfultravels.com.au



QUESTIONS? Ask Grace, Boomerang Activities Coordinator at Reception

Activities may, from time to time, be cancelled or postponed without notice.

Essential Information

Course dates, timetables, application



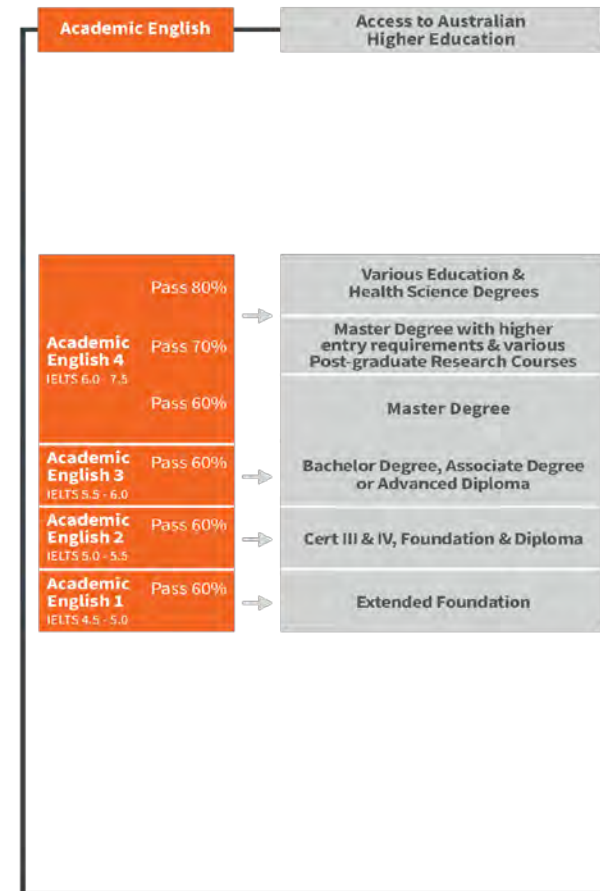
Course progression

Student's investment in money and time is key and that is why the pathway to progress is critical.

Course progression from General English, Cambridge and IELTS Preparation to Academic English

IELTS	CEFR	Online Quiz Score	General English	Cambridge Preparation	IELTS Preparation	Academic English
8.5	C2			C2 Proficiency Leads to AE 4		
8.0						
7.5						
7.0	C1			C1 Advanced Leads to AE 4		
6.5						
6.0						
5.5	B2	41-50	Advanced Leads to AE 4	B2 First Leads to AE 3	Advanced Leads to AE 4	Academic English 4 IELTS 6.0 - 7.5 Pass 80% Pass 70% Pass 60%
5.0						
4.5						
4.0	B1	31-40	Upper Intermediate Leads to AE 3	B1 Preliminary Leads to AE 2	Upper Intermediate Leads to AE 3	Academic English 3 IELTS 5.5 - 6.0 Pass 60%
	A2	21-30	Intermediate Leads to AE 2			Academic English 2 IELTS 5.0 - 5.5 Pass 60%
	A1	16-20	Pre-Intermediate Leads to AE 1			Academic English 1 IELTS 4.5 - 5.0 Pass 60%
	A1	6-15	Elementary			
	A1	0-5	Beginner Contact us for advice			

Course progression from Academic English to your Pathway Partner



Dates & Timetables

Course dates

Navitas English offers regular start dates throughout the year for all courses.

General English and IELTS Preparation classes start every Monday.

[Course Calendar >>](#)

Course indicator & level

Access the current levels of Academic English and Cambridge Preparation we are running in 2023.

[Course Indicator & Level >>](#)

We have three separate timetables allowing students to select a course to match their plans.

Timetable 2023

Timetable 1 - Day (morning) - General English and Cambridge Preparation

Lesson 1 8.10 to 10.10	Break 10.10 to 10.30	Lesson 2 10.30 to 12.30	Break 12.30 to 13.00	myStudy 13.00 to 14.00
----------------------------------	--------------------------------	-----------------------------------	--------------------------------	----------------------------------

Timetable 2 - Day (afternoon) - Academic English and IELTS Preparation

myStudy Assignment Work 11.30 to 12.30	Break 12.30 to 12.35	Lesson 1 12.35 to 14.35	Break 14.35 to 15.05	Lesson 2 15.05 to 17.05
--	--------------------------------	-----------------------------------	--------------------------------	-----------------------------------

Timetable 3 - Evening - General English, IELTS and Cambridge Preparation

Lesson 1 17.10 to 19.10	Break 19.10 to 19.30	Lesson 2 19.30 to 21.30
-----------------------------------	--------------------------------	-----------------------------------

Information is correct at the time of publishing but is subject to change.

Resources

A range of flyers, videos and factsheets are available to guide you through the application process.

Accessible via the [agent portal](#).

Supporting you all the way to achieve a quick enrolment.

How to get started and apply?

- a. [Online](#) or [PDF application form](#)
- b. [How to complete an application form](#) – guaranteeing speedy outcome
- c. [Quiz](#) which will indicate a student's level and avoid issues on day 1
- d. [Study plan](#) – how to create a good study plan
- e. [Course dates](#) and [timetable for 2023](#)
- f. [Instalments plan – F&Q](#)
- g. [Free one-way flight](#) between campuses subject to T&C
- h. [Homestay preference](#) form to be submitted with student application
- i. [Homestay & Accommodation and service fees to June 30 2023](#)
- j. [Homestay & Accommodation and service fees from January 2024](#)
- k. [Level and timetables](#) confirms classes and levels operating by campus
- l. [Conditions of Enrolment](#) student need to know these
- m. [Pre-course tests](#) for IELST, Cambridge and AE courses
- n. [Translated course](#) materials and videos

Student Guide

Provided in multiple languages for your students ease of reference.

Now available for download below and from the Agent Portal



English



Chinese



Indonesian



Japanese



Korean



Portuguese



Spanish



Vietnamese

[Agent Downloads >>](#)



Keep in touch

Recruitment and admissions team are here to assist you:

1. For Japan - Chikako Mase Chikako.Mase@navitas.com
2. For Sydney & ASIA + MENA - Daren Tearney Daren.Tearney@navitas.com
3. For ASIA - Yvonne Ding Yvonne.Ding@navitas.com
4. For Perth & LATAM + Europe - Rafael Garutti Rafael.Garutti@navitas.com
5. Admissions - admissions@navitasenglish.com

navitasenglish.edu.au



@navitasenglish